

MITSUBISHI ELECTRIC  
POWER PRODUCTS, INC.

# 15KV VACUUM CIRCUIT BREAKER



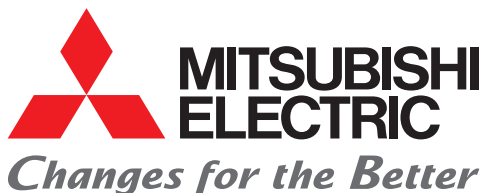
## Mitsubishi Electric's new compact 15kV Vacuum Circuit Breaker greatly reduces O&M costs.

Mitsubishi Electric Power Products, Inc. (MEPPI) is proud to introduce our next-generation 15kV Vacuum Circuit Breaker. The latest addition to the medium-voltage vacuum circuit breaker family is designed, assembled, and tested in the USA and offered at market-first competitive price.

MEPPI's 15kV circuit breaker integrates the most reliable spring/spring mechanism in the industry. With superior reliability, performance and an extended equipment life in mind, MEPPI utilizes the highest quality mounting frames, enclosures, and controls to deliver on that promise.

Known for its resilient protection, Mitsubishi Electric's proven vacuum interrupter technology provides for a compact design and adds a level of comfort within power distribution applications with over 5 million units in service. At the same time, vacuum interrupter technology also improves reliability by substantially reducing the costs associated with inspection and maintenance.

The 15kV circuit breaker follows MEPPI's footprint of offering a suite of options with the intention of customer modularity while being contained within an ergonomic enclosure.

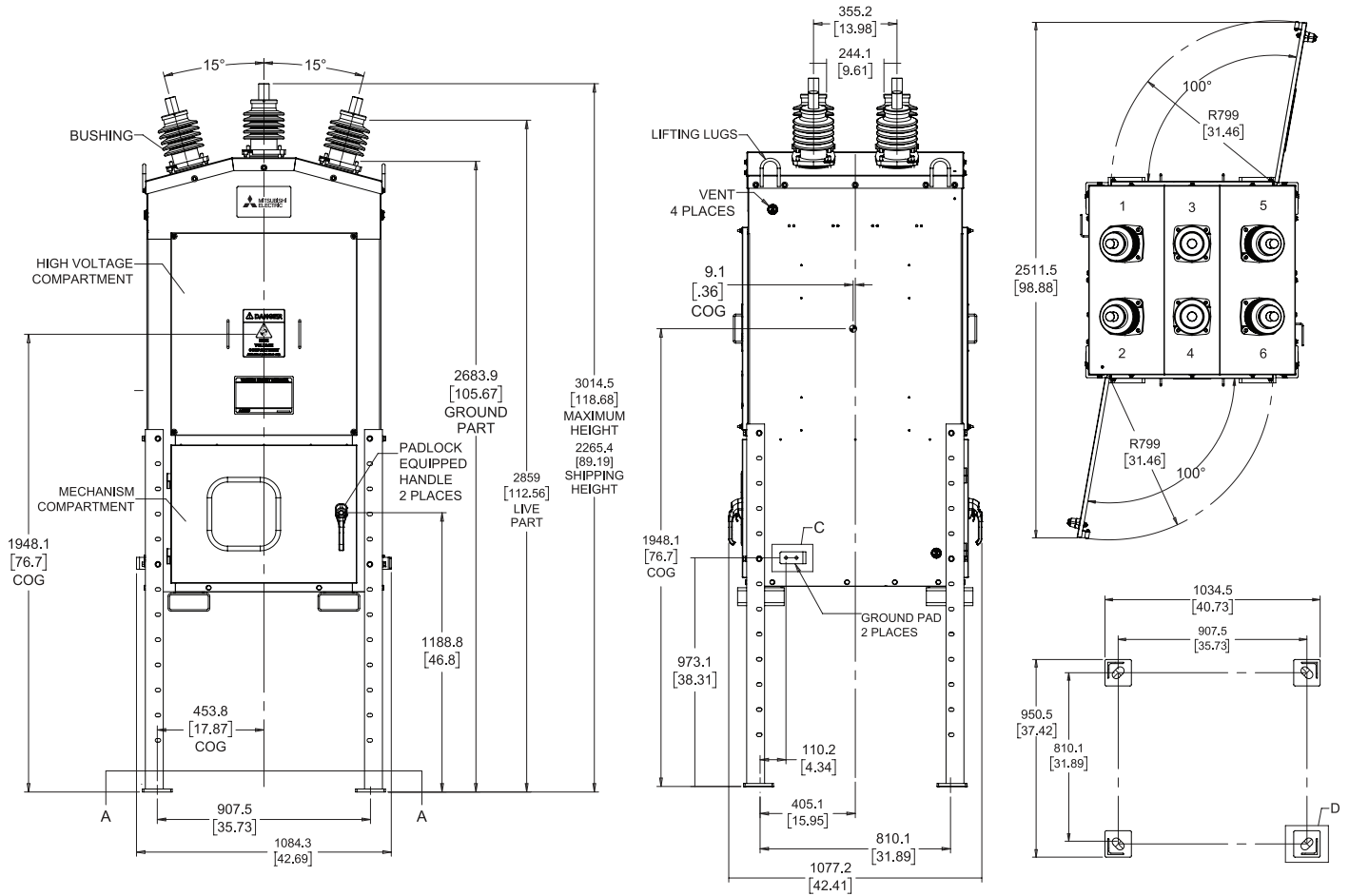


## PRODUCT FEATURES

- ◆ NEMA 3X cabinet that is environmentally sealed and meets high seismic specifications.
- ◆ Rated to exceed a 30 year lifetime with 10-year maintenance intervals
- ◆ Certified and tested in accordance with IEEE C37.06, C37.09, and C37.10.
- ◆ It is compliant with the latest ANSI standards within an operating temperature range of -50°C TO +50°C.
- ◆ Rated for 1200 and 2000 Amps continuous current.
- ◆ Rated for 40 full fault interruptions at 25 kA short-circuit current.
- ◆ Compact design suitable for circuit breaker replacement in the tightest quarters
- ◆ Industry's longest and most complete warranty.
- ◆ USA-based installation, commissioning and field service support.

**MITSUBISHI 15KV VACUUM CIRCUIT BREAKER**

# TECHNICAL SPECIFICATIONS



Base Reference Standard	IEEE C37, IEC 62271	Chopped Wave Impulse:	142kV
Rated Voltage:	15.5kV	Rated Nominal Current:	1200/2000A
Rated Frequency:	50/60Hz	Rated Short Time Withstand Current:	25kA
Rated Symmetrical Fault Current:	25kA	Short Circuit Making Current (C&L):	65kA
Breaker Reclose Duty:	O-0.3s-CO-15s-CO	Full Fault Interruptions:	40 minimum
Breaking Time:	3 Cycles	Mechanical Life:	10000 (min)
Mechanism:	Spring-Spring	Load Current Electrical Life:	10000 (min)
Vacuum Interrupter:	Mitsubishi Electric	Mechanism Maintenance Cycle:	10 years
1Min. Dry:	50kV	Seismic Rating Per IEEE-693:	HIGH (0.5g)
10 Sec. Wet:	45kV	Operating Temperature Range:	-50°C TO +50°C
With Internal Barriers:	110kV	Enclosure Rating:	NEMA 3X

**MITSUBISHI ELECTRIC POWER PRODUCTS, INC.**

Corporate Headquarters  
 Thorn Hill Industrial Park  
 530 Keystone Drive  
 Warrendale, PA 15086  
 724.772.2555

© 2020 Mitsubishi Electric Power Products, Inc.  
 All Rights Reserved. Printed in USA  
 Publication No. SA0030108001  
 January 2020

